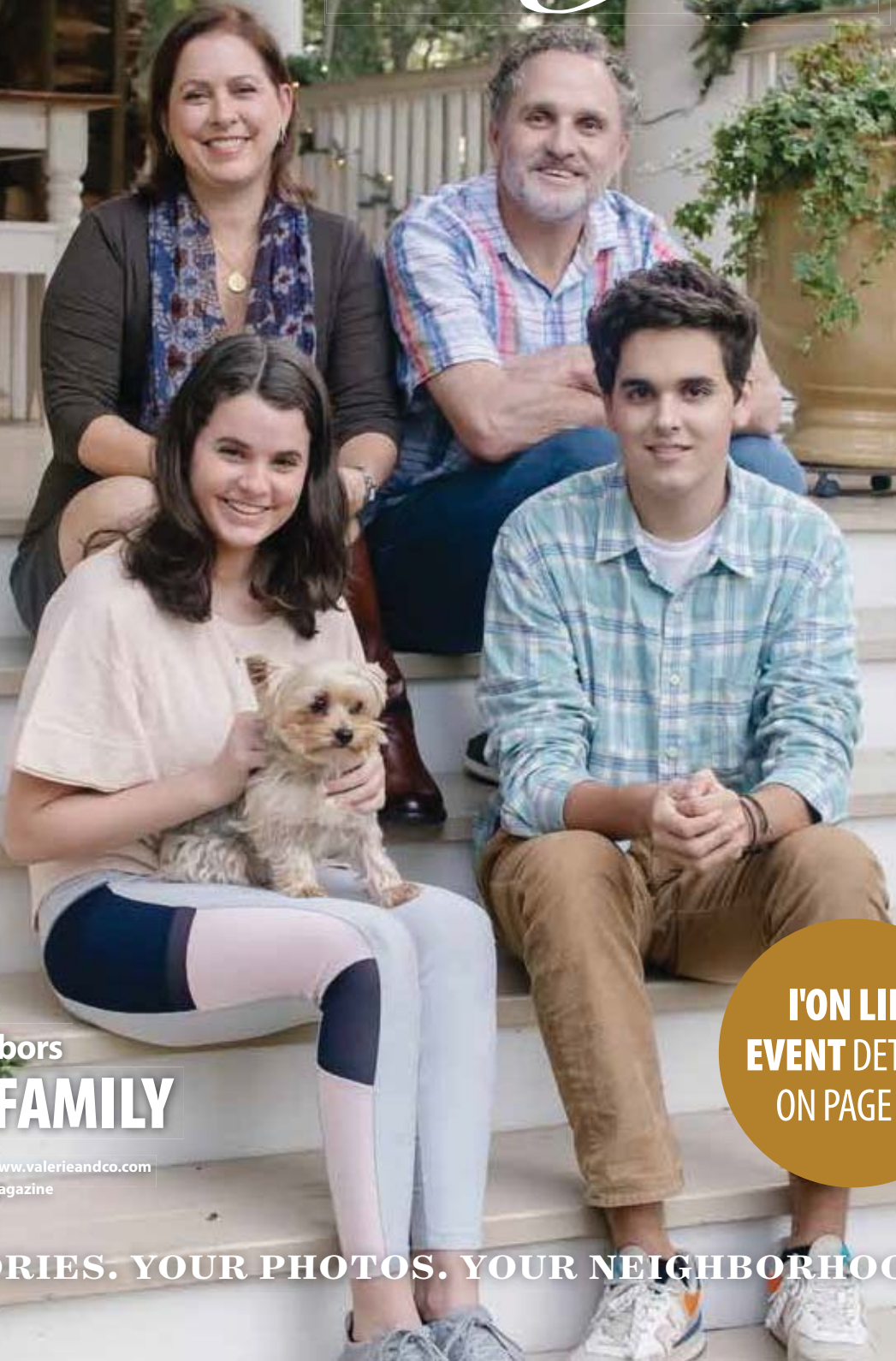




I'ON *Life*

THE EXCLUSIVE NEWSLETTER FOR THE RESIDENTS OF I'ON

MARCH 2020



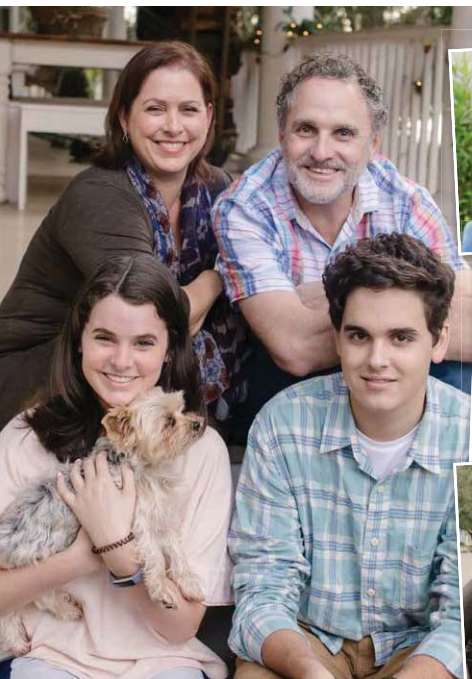
meet your neighbors

THE JOYE FAMILY

Cover Photo by Valerie Brantley, www.valerieandco.com
Follow Us On Instagram: [i_onlifemagazine](https://www.instagram.com/i_onlifemagazine)

**I'ON LIFE
EVENT DETAILS
ON PAGE 11**

YOUR STORIES. YOUR PHOTOS. YOUR NEIGHBORHOOD.



meet your neighbors

the JOYE family

DEDICATED TO HELPING OTHERS

Photos by Valerie Brantley.
www.valerieandco.com



Todd grew up in Mt. Pleasant and I in Pennsylvania. We met on a blind date in 1995 when he was an anesthesia resident at MUSC and I was the new Upper School French teacher at Ashley Hall. We had a great first date and many more followed until we were married in 1996. Todd went on to complete a fellowship in Pain Management and eventually opened a private practice in Mt. Pleasant called InterveneMD. He has dedicated the last 20 years to providing relief to those in our community suffering from chronic spine or joint pain and has quite a loyal following.

Shortly after we welcomed our first child Benjamin into the world in 1999, my parents came to visit their first grandchild and it was Todd who insisted my dad see a colleague about his chronic cough and headache. It turned out my dad had stage 4 lung cancer and we lost him only 4 months later. We were devastated. My mom never recovered and soon slipped into early onset Alzheimer's. It was a very dark time.

When I was pregnant with our second son William, my dad's namesake, Todd and I decided to look at some houses in I'On. My parents had always loved driving through the neighborhood during their visits to see us. We all loved the look and layout of the neighborhood, but it was also important to us that we find a strong sense of community with neighbors of all ages. We learned that the neighborhood, its amenities and

social programs had all been especially designed to encourage community and that there were many generations of people already living in I'On. After touring several homes we found ourselves standing on an empty lot on the corner of West Shipyard and Moultrieville. Looking out across the amphitheater and West Lake at that time, there were only two or three houses within view. It was pretty, but also a bit stark. We felt a steady gentle breeze coming off the lake even on that hot day and we decided to take a leap of faith. We would buy this lot and build our family's home here and start a new chapter.

Our life has since been one very busy adventure. We somehow managed to enjoy designing and building our house and garden all while caring for two children under the age of three. Todd and I were a great team and got us moved in and settled before we welcomed our third child, our daughter Emily, in 2005. While we loved our new house, we knew it would be *people* that would truly make it a home. It was indeed heart-warming when neighbors became friends we could depend on while doing life together.

I promise you, over the next 15 years, our family of five has taken advantage of almost **EVERY** amenity I'On has to offer: the playgrounds, the pool and its classes and swim team, the fitness center and its classes, the marsh path and the paths around the lakes, the dock and easy access

to the creek for kayaking, boating and jet skiing, the sports fields for soccer, football and ultimate frisbee, and the courts for tennis and basketball. We have used and enjoyed them all!

Life hasn't always been easy just because we live in a beautiful place. We've lost some precious neighbors and family members—some have simply moved while others have passed on. There was the economic crash of 2007 and then Todd's dad Reese died suddenly in 2008. Todd's mom Jackie and I both survived breast cancer in 2015 when Benjamin was 16, William was 13 and Emily was 10. I think ultimately it's made us all incredibly grateful for our faith, our health and each other. Today, Benjamin is a junior at Clemson University studying Computer Information Systems, William is a senior at Porter Gaud and will be off to the University of Colorado-Boulder next fall and Emily is in the 9th grade at Ashley Hall and just got her driver's permit and is looking for her first summer job.

Soon it will be just Todd and me and our little dog Sugar in our home on West Shipyard Road and I've wondered how I might best use my time. I feel like Todd and I may possibly be equipped to affect a change in the way people and their loved ones in the tri-county area cope with a cancer diagnosis. Over the past 3 years we've been laying the groundwork to establish an independent affiliate of the Houston-based nonprofit named "CanCare" which has provided one-on-one emotional support to over 300,000 people facing cancer. Can you imagine how helpful it would be to have a local organization whose sole purpose is quickly connecting those newly diagnosed with cancer with a trained mentor who has survived the very same type of cancer? I'm proud to report CanCare of Charleston has already trained 40 volunteers locally and that 5 of those are I'On residents! There is so much important work still to be done and we hope to inspire more of our I'On neighbors to get involved. If you or someone you know is ready to receive or offer support, **please contact me at lynnjoye@comcast.net or visit www.Cancare.org**